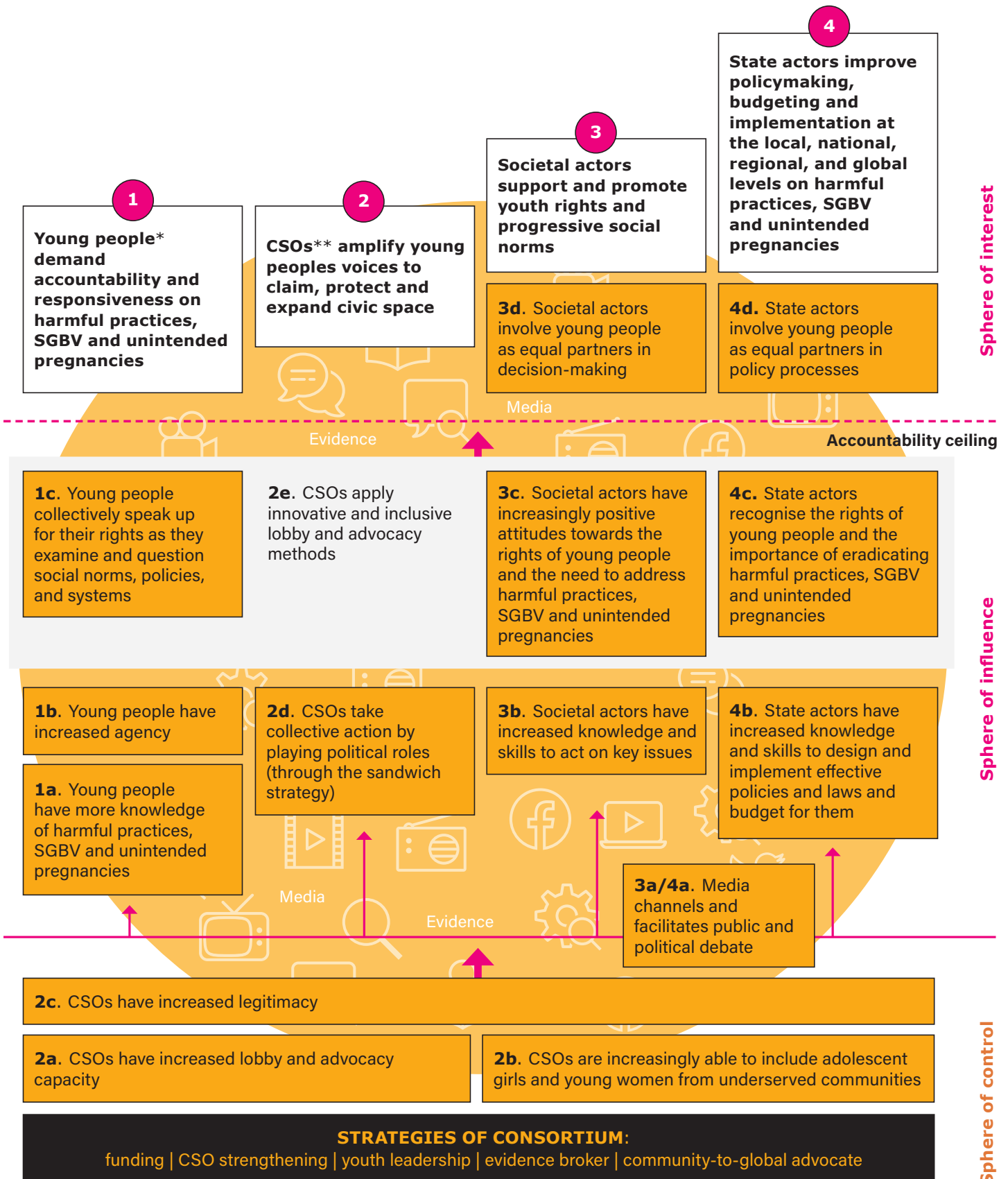


More adolescent girls and young women from underserved communities are meaningfully included in decision-making processes regarding harmful practices, SGBV and unintended pregnancies.



*Young people, particularly adolescent girls and young women, from underserved communities

**CSOs include Youth-Led Organizations (YLOs), Community Based Organizations (CBOs) and Women-Led Organizations (WLOs)